



# HiGuard V / X

快速安裝手冊  
QUICK  
INSTALLATION  
GUIDE

# 目錄 / Index

---

English QIG (Quick Installation Guide).....	2
I. Hardware Installation.....	2
1. Appearance.....	2
2. Deployment.....	3
II. System Setting.....	4
Easy system configuration steps.....	4
<b>繁體版快速安裝指引.....</b>	<b>10</b>
<b>一、硬體安裝.....</b>	<b>10</b>
1. 硬體外觀說明.....	10
2. 硬體連接設定.....	11
<b>二、系統設定.....</b>	<b>12</b>
簡易系統設定步驟.....	12

# English QIG (Quick Install Guide)

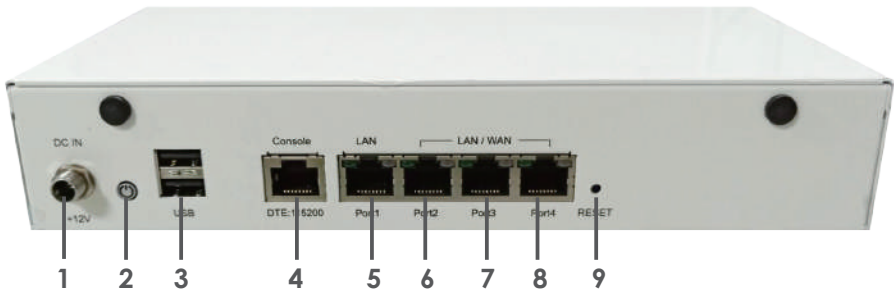
## I. Hardware Installation (HiGuard X and V)

### 1. Appearance

#### Front panel



#### Rear panel

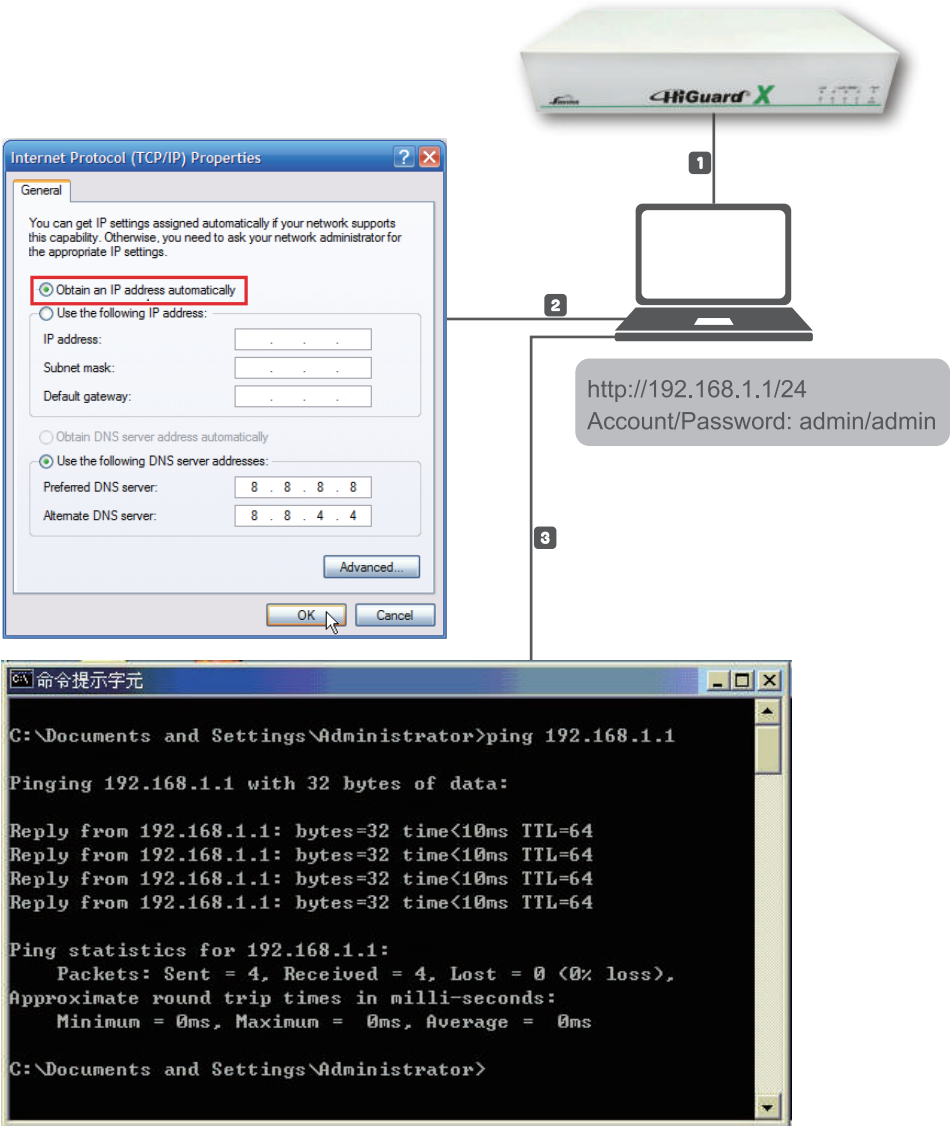


## Interfaces

- |                         |   |
|-------------------------|---|
| 1. Power Connection     | 100-240V AC, 50-60Hz adapter  |
| 2. Power Button         | In red color when power off; in blue color when power on.   |
| 3. USB ports            | USB 2.0 performs an instant recovery using USB sticks during system suspend. Wireless 3G, 4G/LTE are supported to offer uninterrupted WAN connectivity. |
| 4. Console Port         | For inspecting settings remotely.   |
| 5. LAN port             | Gigabit Ethernet LAN port that connects to the intranet   |
| 6. Port 2 (Custom port) | Gigabit Ethernet WAN/LAN-PHY Flexible Interface   |
| 7. Port 3 (Custom port) | Gigabit Ethernet WAN/LAN-PHY Flexible Interface   |
| 8. Port 4 (Custom port) | Gigabit Ethernet WAN/LAN-PHY Flexible Interface   |
| 9. RESET                | Using a pointed object, press the button on the steadily for 15 seconds and then release it.  |

## 2. Deployment

- 1 Connect LAN (RJ45), and Cat. 5e to the device LAN Ethernet Port.
- 2 Configure a LAN with DHCP and you'll obtain 192.168.1.x/24(IP segment) automatically.
- 3 After getting the IP, ping 192.168.1.1 to ensure network connection.



## II. System Setting

### Easy system configuration steps

#### STEP 1

#### Start Browser

- <https://192.168.1.1>
- Acct./PW :admin / admin
- Select a preferred language

#### STEP 2

#### Setup Wizard

- Setup LAN
- Setup WAN
- URL Blacklist
- Security Setting
- Mail Management (available in HiGuard X)

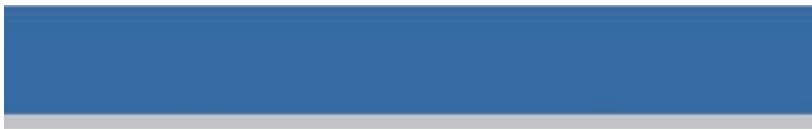
## STEP 1. Start Browser (Chrome)

1.1 Open the web browser and enter **https://192.168.1.1** in the address bar.



1.2 Enter login Account / Password

Chrome will pop up for authentication, please enter **admin** (account) / **admin** (password) to log in. And select a preferred language for interfaces, currently available in English/ Traditional Chinese / Simplified Chinese.



# Higuard X

Account

admin

Password

\*\*\*\*\*

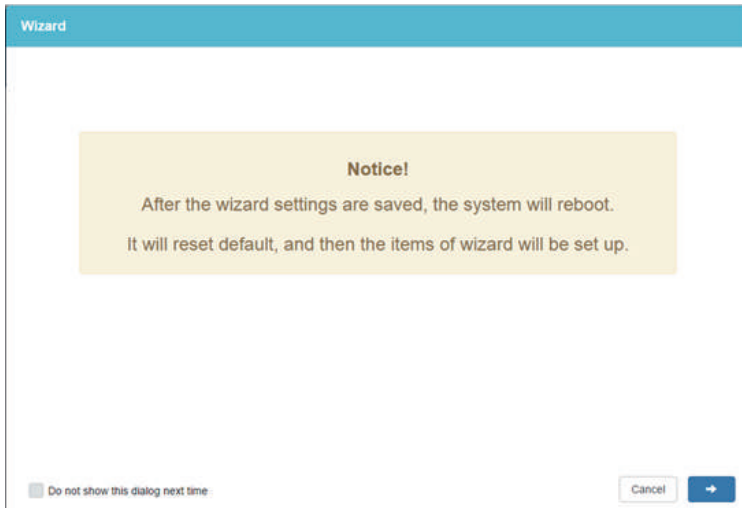
Remember account and password

English ▼

Login

1.3 Login completed. The wizard will automatically pop up to guide you through the configuration.

**NOTE:** A step-by-step wizard will wipe all your data and settings before saving new settings.



## STEP2. Setup Wizard

### 2.1 Setup LAN

Please enter your IP address and Subnet mask .

The screenshot shows the "STEP 1 - Network Interface LAN" configuration screen. At the top, there is a progress bar with six steps: 1. LAN (selected), 2. WAN, 3. URL Blacklists, 4. Security Settings, 5. Mail Management, and 6. Setup Completed.

Below the progress bar, there is a dropdown menu with "LAN" selected. Below that, there are several fields:

- Enable: STATIC
- Name: LAN
- IP address: 192.168.1.1
- Subnet mask: 255.255.255.0

At the bottom right, there are three buttons: "Cancel", a blue button with a left-pointing arrow, and a blue button with a right-pointing arrow.

## 2.2 Setup WAN

Administrators can click on the drop-down arrow to select preferred connection methods. One WAN port must be enabled to proceed.

**STATIC:** IP address, subnet mask, and default gateway are required to configure WAN setting. The default gateway is 255.255.255.0

**DHCP:** A connection method that IP address is assigned by a router/switch in the perimeter. IP address, subnet mask, and default gateway are not required.

**PPPOE:** DSL providers typically use this option. Please enter the account and password provided by your ISP to gain access to the Internet. If your ISP provides you a set IP address, you are able to select STATIC.

**STEP 2 - Network Interface WAN**

1 LAN 2 WAN 3 URL Blacklists 4 Security Settings 5 Mail Management 6 Setup Completed

WAN1 WAN2

Enable: STATIC

Name: WAN1

IP address: 192.168.186.97

Subnet mask: 255.255.255.0

Default gateway: 192.168.186.1

Management IP:

Cancel ← →



### 2.3 Setup URL Blacklists

URL Blacklist is switched off by default. Administrators can enable the function, select match level, enter blacklisted URL or IP, or select default categories.

**STEP 3 - Url blacklists**

1 LAN 2 WAN 3 URL Blacklists 4 Security Settings 5 Mail Management 6 Setup Completed

Setting

URL Blacklist  ON

Match level  Exact  Fuzzy

Blacklisted URL

Blacklisted IP

Default Blacklist

<input checked="" type="checkbox"/> Aggressive	<input checked="" type="checkbox"/> Audio-video	<input checked="" type="checkbox"/> Drugs
<input checked="" type="checkbox"/> Gambling	<input checked="" type="checkbox"/> Hacking	<input checked="" type="checkbox"/> Porn
<input checked="" type="checkbox"/> Proxy	<input checked="" type="checkbox"/> Redirector	<input checked="" type="checkbox"/> Spyware
<input checked="" type="checkbox"/> Suspect	<input checked="" type="checkbox"/> Warez	

Cancel

### 2.4 Setup Security Settings

Security settings are switched on by default. Administrators can select actions taken on detected anomalies.

**STEP 4 - Security settings**

1 LAN 2 WAN 3 URL Blacklists 4 Security Settings 5 Mail Management 6 Setup Completed

Firewall Protection

Firewall protection  ON

Anomaly Detection

Anomaly Detection  Log  Notify  Block

SMTP

Blocking actions

Intranet Protection

Collision detection : IP  ON

Collision detection : MAC  ON

Cancel

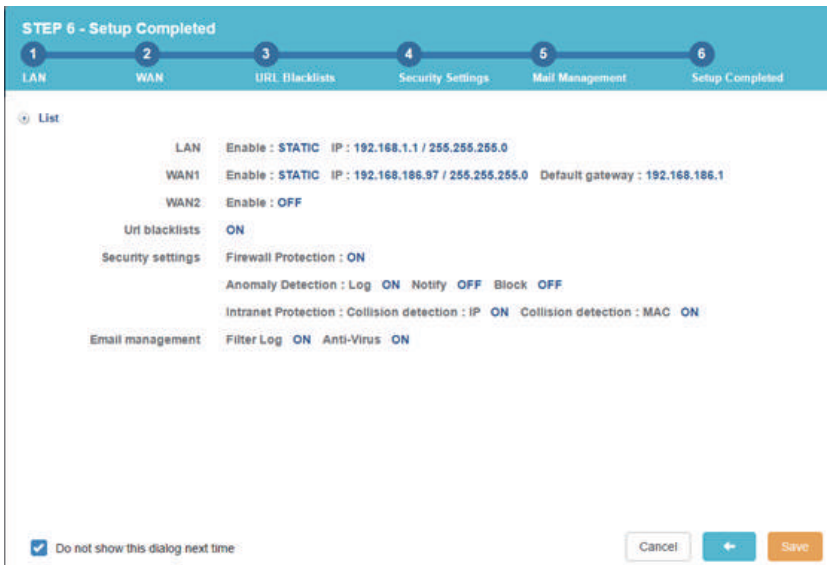
## 2.5 Setup Mail Management (available in HiGuard X)

Filtering log and anti-virus are switched on by default. Administrators can choose manually to switch off if it is not required.



## 2.6 Setup Completed

To save your configuration settings, click the Save button in the lower right corner. Please wait for the Setup Wizard to finish. This could take up to 120 seconds.



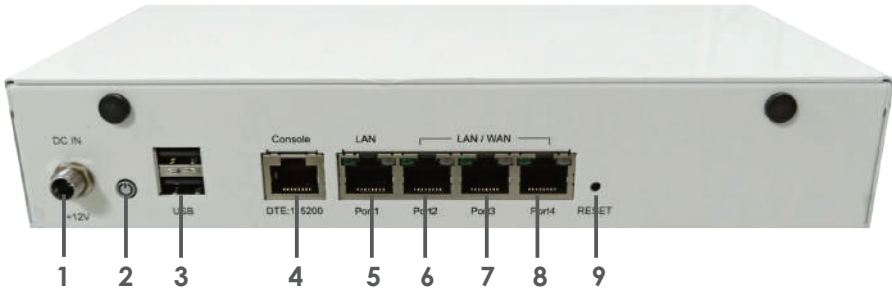
# 繁體版 快速安裝指引

## 一、產品外觀

### 機器正面



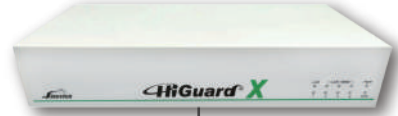
### 機器背面



1. 電源連接埠 100-240V AC, 50-60Hz 變壓器。
2. 電源鍵 當設備為關機狀態時亮紅色燈，為開機狀態時亮藍燈。
3. USB埠 當設備發生意外狀況導致無法正常運作，可透過USB裝置進行設定檔快速復原。可外接無線3G/4G USB，提供有線/無線即時備援與負載平衡機制。
4. Console埠 主要用途為查看系統內部網路介面設定。
5. LAN 埠 內部網路介面，將企業內部的網路連結在此網路面。
6. Port 2自定義埠 使用者可以自行定義 WAN或LAN。
7. Port 3自定義埠 使用者可以自行定義 WAN或LAN。
8. Port 4自定義埠 使用者可以自行定義 WAN或LAN。
9. RESET 利用小型的針狀物長按15秒按鈕後，設備會重開機。

## 2. 硬體連接設定

- 1 RJ45, Cat 5e, 連接設備 LAN 埠
- 2 電腦區域網路設定成 DHCP 模式，即可自動取得 192.168.1.x/24 同網段 IP。
- 3 IP 取得後，於設定電腦上 Ping 192.168.1.1



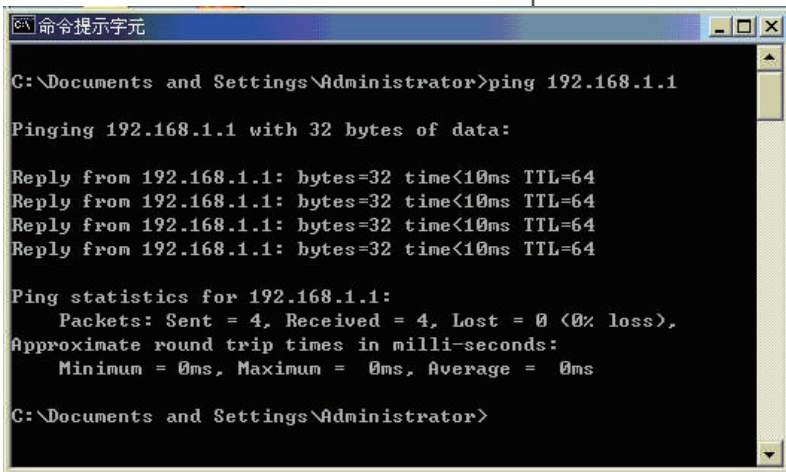
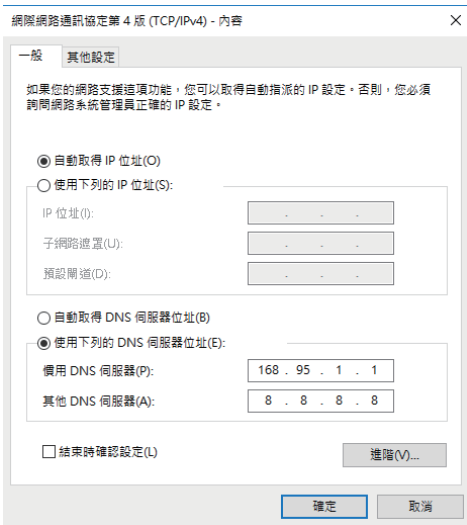
1



2

http://192.168.1.1/24  
帳號/密碼: admin/admin

3



## 二、系統設定

### 簡易系統設定步驟

#### STEP 1

#### 開啟瀏覽器

- IP : 192.168.1.1
- 帳號/密碼 : admin / admin
- 選擇介面語系

#### STEP 2

#### 設定安裝精靈

- LAN 設定
- WAN 設定
- URL 黑名單設定
- 防護設定
- 郵件管理 (HiGuard X有此功能)

## STEP 1. 開啟瀏覽器 (Chrome)

### 1.1 輸入遠端登入網址

打開Chrome 瀏覽器，於網址輸入 **https://192.168.1.1**



### 1.2 輸入登入帳號/密碼

在彈出的Chrome視窗再次輸入 **admin** (帳號) / **admin** (密碼) 後點選「系統登入」。並選擇介面語系，目前支援英語、繁體中文、簡體中文三種語系。



**Higuard X**

帳號  
admin

密碼  
.....

記住登入帳號

繁體中文 ▼

系統登入

1.3 登入管理者介面後，將自動開啟安裝精靈，引導管理者完成設定流程。

註: 注意安裝精靈會先清除目前資料，再儲存新設定。



## STEP2. 設定安裝精靈

管理者請按下下方右鍵按鈕，進行下一個安裝精靈步驟。

### 2.1 LAN 設定

請輸入IP 位址與網路遮罩。



## 2.2 WAN 設定

請按下箭頭選擇所需的連線模式，至少設定一個WAN才可繼續安裝精靈流程。

**【STATIC】** 需自訂IP位址、網路遮罩和閘道，預設網路遮罩255.255.255.0

**【DHCP】** 由上端設備主動配發，不需要設定IP位址、網路遮罩和閘道。

**【PPPOE撥接】** 由電信業者主動配發，不需要設定IP位址、網路遮罩和閘道。如果配發的是固定IP，也可先選STATIC。

The screenshot displays the 'STEP 2 - 網路介面設置 WAN' configuration screen. At the top, a progress bar shows six steps: 1 LAN, 2 WAN (current), 3 URL Blacklists, 4 Security Settings, 5 Mail Management, and 6 Setup Completed. Below the progress bar, there are two tabs for 'WAN1' and 'WAN2'. The 'WAN1' tab is active, showing the following configuration fields:

- 啟用: STATIC (dropdown menu)
- 名稱: WAN1
- IP 位址: 192.168.106.97
- 網路遮罩: 255.255.255.0
- 預設閘道: 192.168.106.1
- 管理 IP:

At the bottom right, there are three buttons: '取消' (Cancel), a left arrow, and a right arrow.



## 2.3 URL 黑名單設定

預設關閉，管理者可依照需求開啟此功能，選擇對比模式、輸入URL 或 IP 黑名單，或勾選預設黑名單進行管理。

STEP 3 - URL 黑名單設定

1 LAN 2 WAN 3 URL Blacklists 4 Security Settings 5 Mail Management 6 Setup Completed

設定

URL 黑名單  ON

對比模式  完整  模糊

URL 黑名單

IP 黑名單

預設黑名單

<input checked="" type="checkbox"/> 符合暴力	<input checked="" type="checkbox"/> 線上影響	<input checked="" type="checkbox"/> 廣告
<input checked="" type="checkbox"/> 推播	<input checked="" type="checkbox"/> 駁答	<input checked="" type="checkbox"/> 成人網站
<input checked="" type="checkbox"/> 代理伺服器	<input checked="" type="checkbox"/> 轉賣	<input checked="" type="checkbox"/> 後門程式
<input checked="" type="checkbox"/> 不信任網站	<input checked="" type="checkbox"/> 非法盜版	

取消 ← →

## 2.4 防護設定

預設開啟，管理者可依照需求對於異常IP進行紀錄、通知或阻擋。

STEP 4 - 防護設定

1 LAN 2 WAN 3 URL Blacklists 4 Security Settings 5 Mail Management 6 Setup Completed

防火牆功能

防火牆防牆設定  ON

異常IP分析

異常IP分析  紀錄  通知  阻擋

SMTP

Mail server   OFF TLS OFF

收件者

阻擋動作   分

內網防護

偽造者偵測: IP  ON

偽造者偵測: MAC  ON

取消 ← →

## 2.5 郵件管理設定 (HiGuard X 有此功能)

預設開啟，管理者可依照需求選擇是否關閉。



## 2.6 設定完成

最後顯示設定清單，確認後請按下儲存鍵，請稍後120秒，安裝精靈將儲存此設定。

